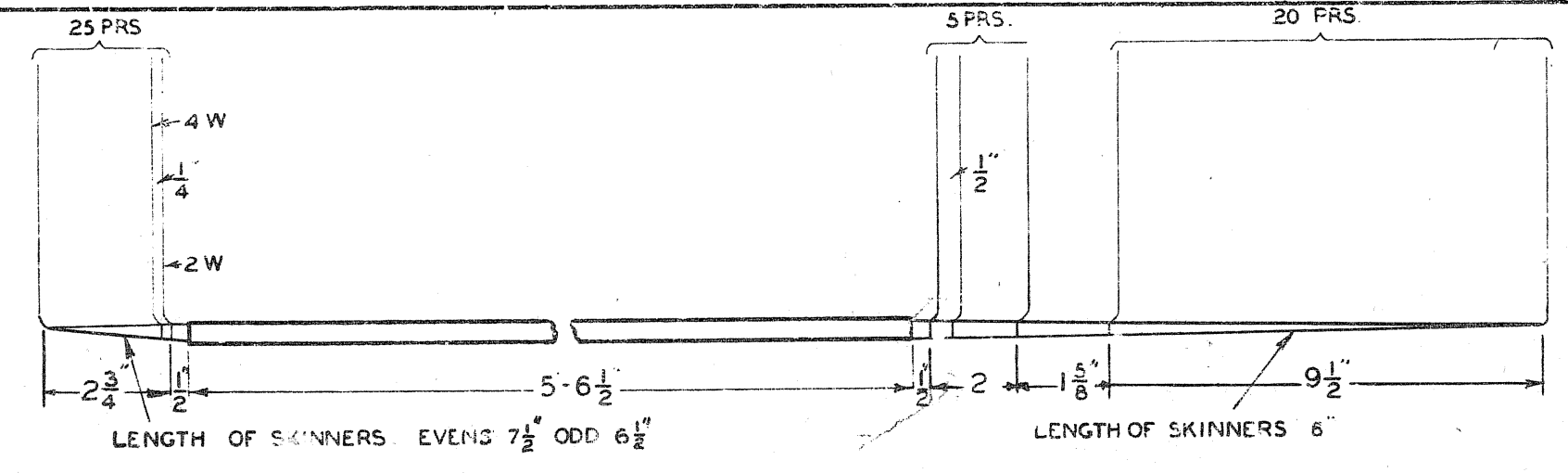
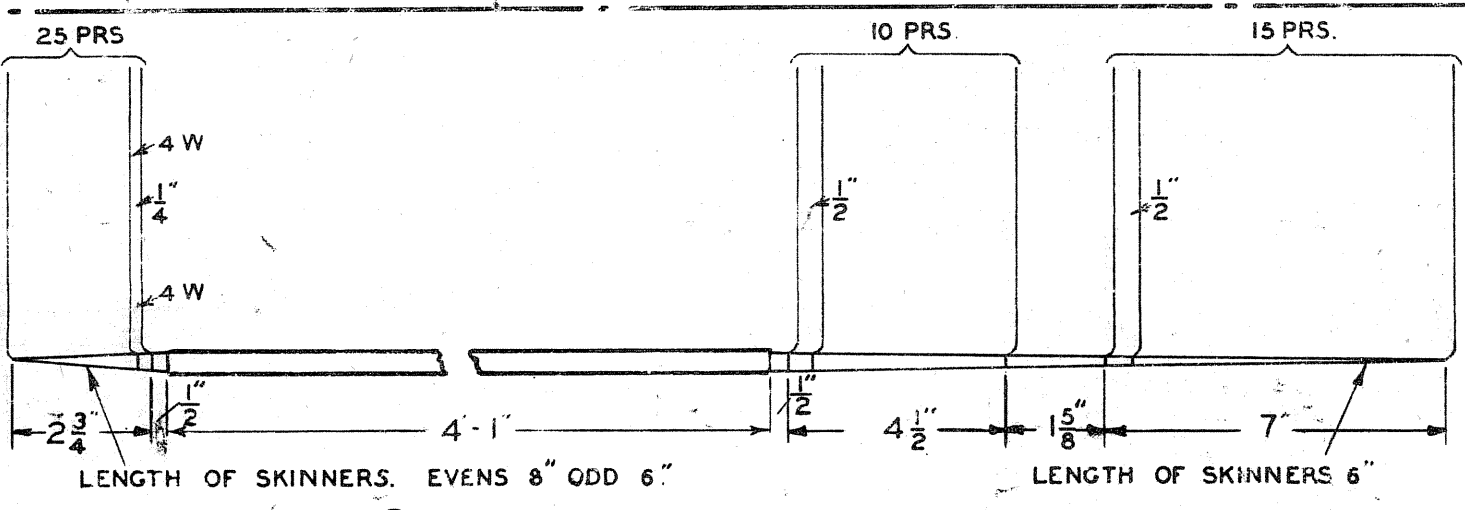


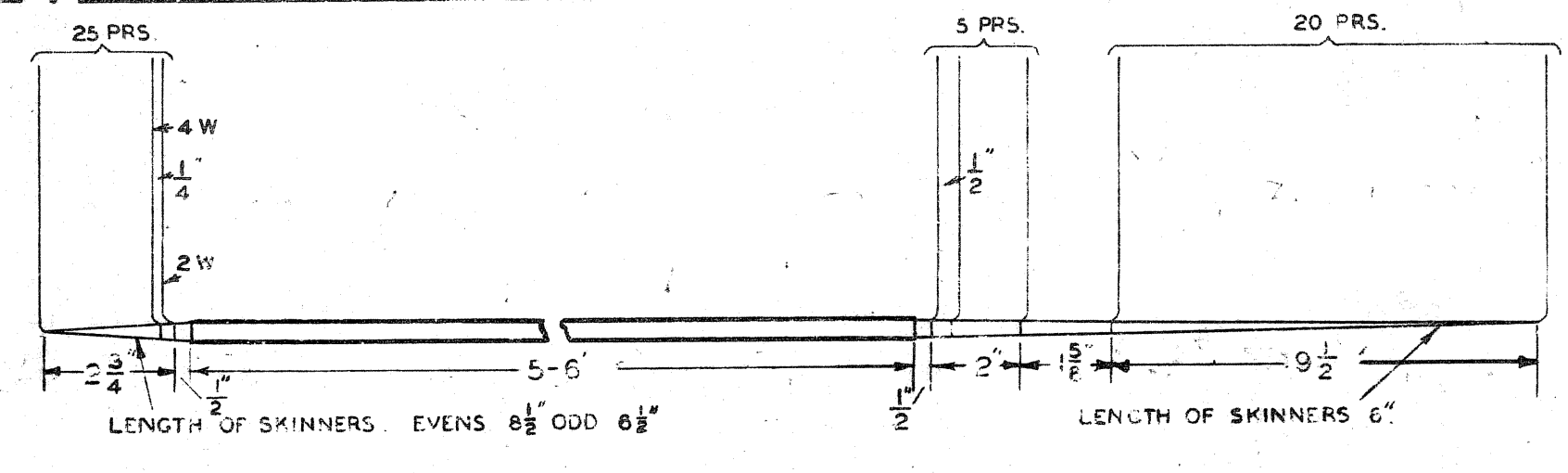
1. SUBS 200-224 (50 WIRE CABLE)



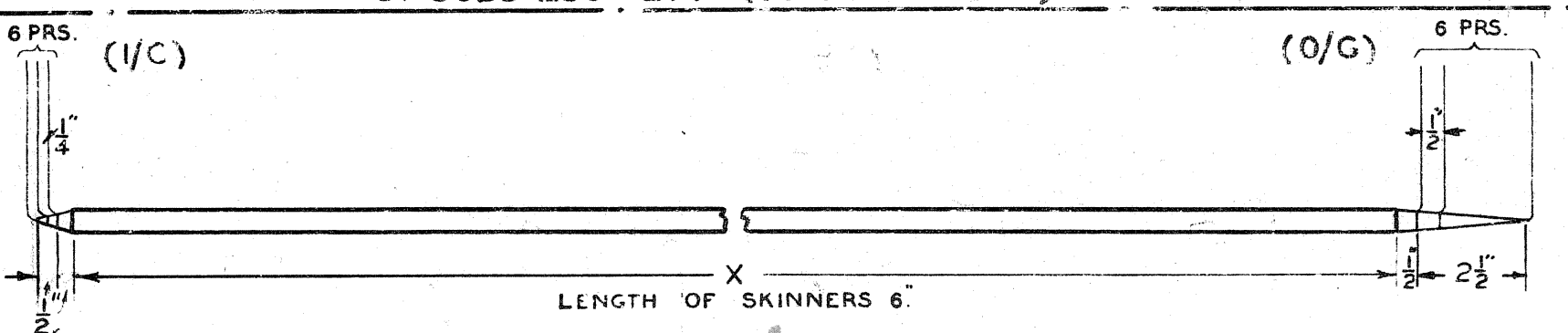
2. SUBS 225-249 (50 WIRE CABLE)



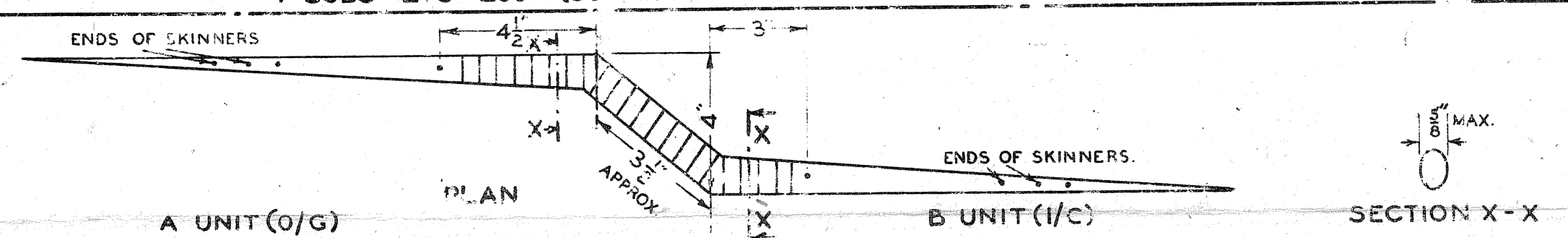
3. SUBS 250-274 (50 WIRE CABLE)



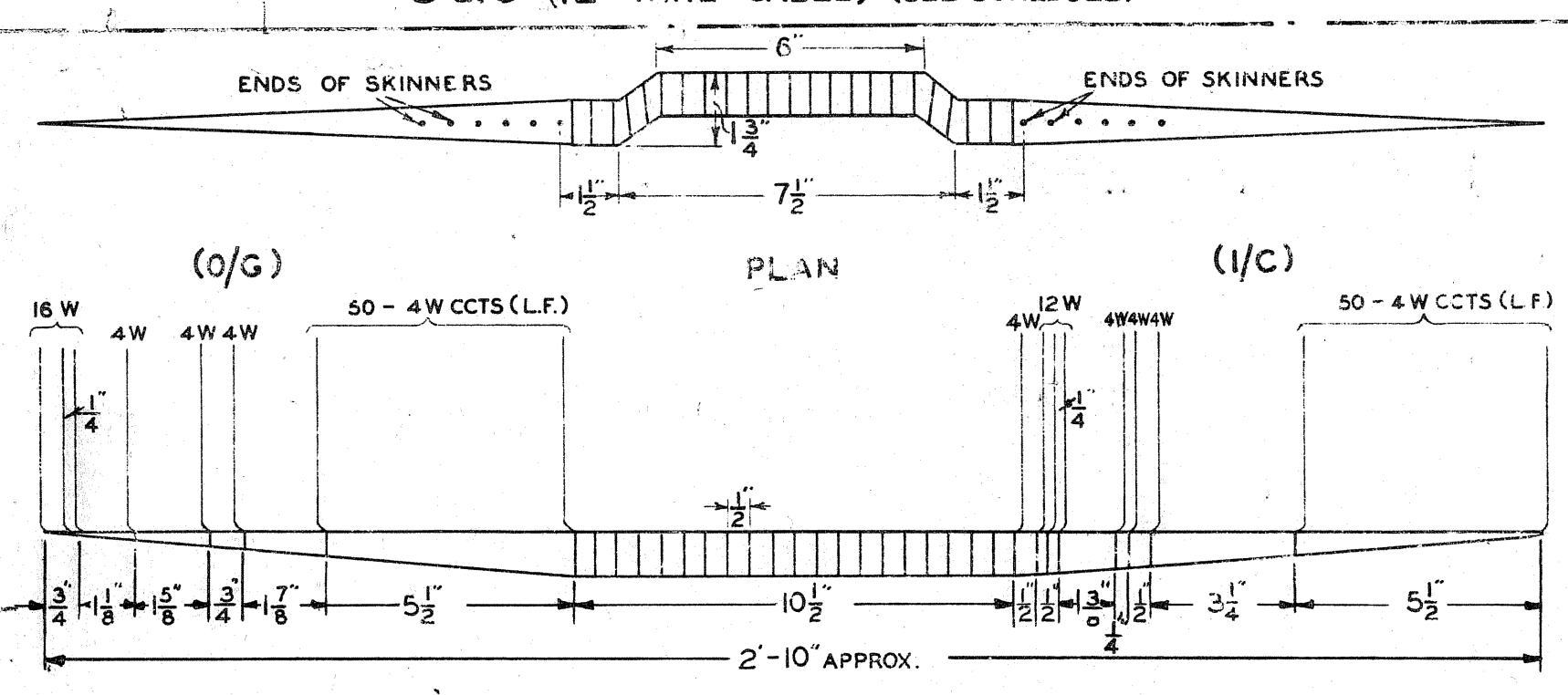
4. SUBS 275-299 (50 WIRE CABLE)



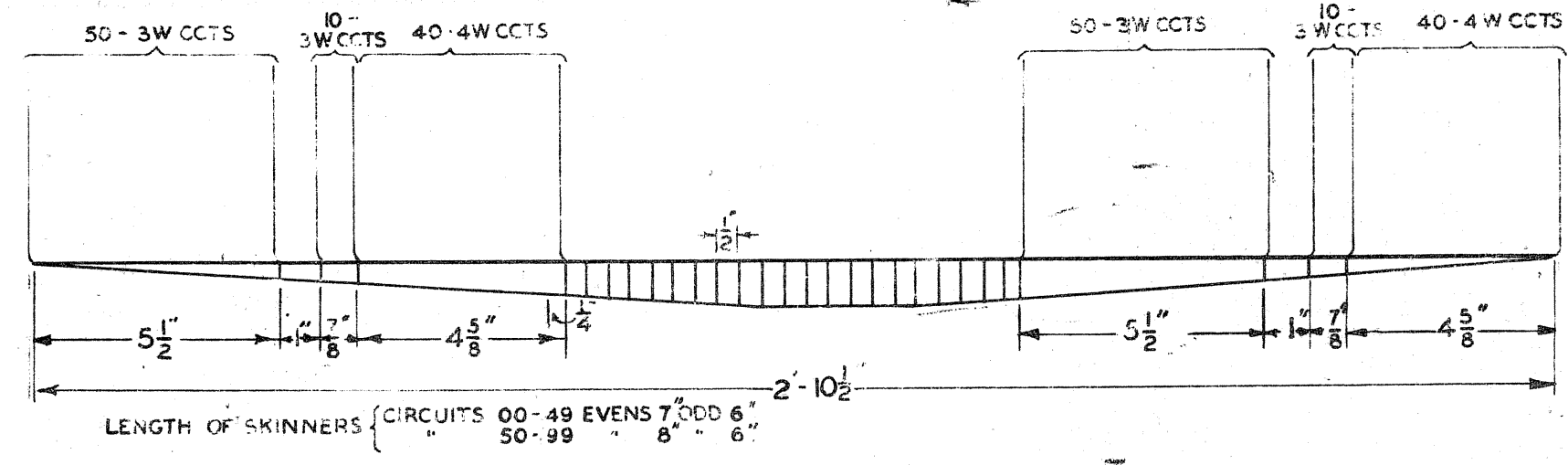
5 & 6 (12 WIRE CABLE) (SEE SCHEDULE)



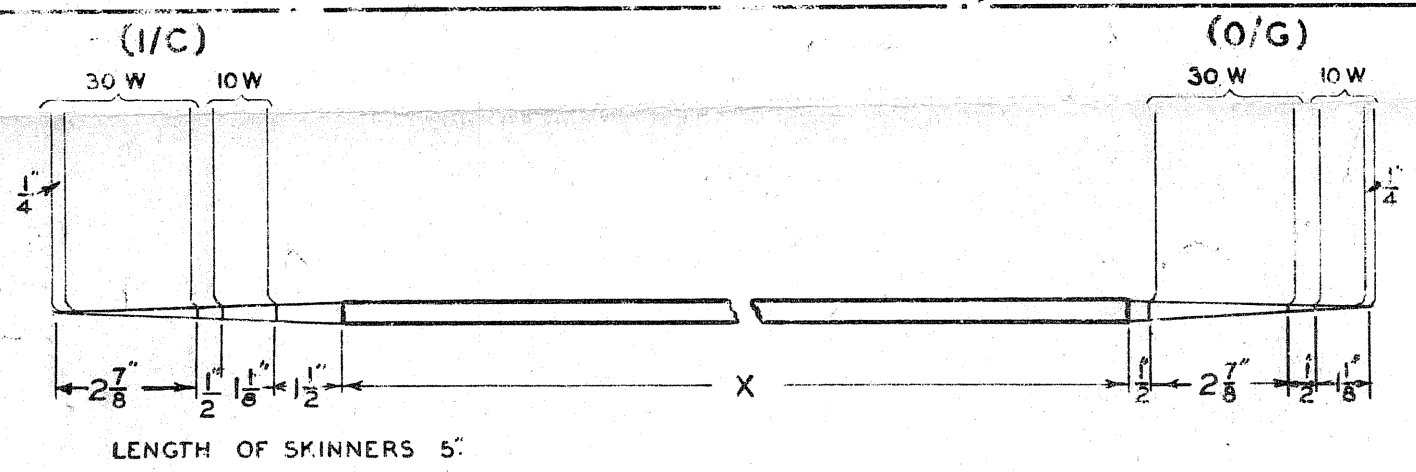
7. SELECTOR MULTIPLE (340 WIRES)



8. LINE FINDER MULTIPLE, JCN. ETC. (228 WIRES)



9. SELECTOR MULTIPLE (340 WIRES)



10 & 11. MISC. CABLES (40 WIRES) (SEE SCHEDULE)

5	X = 4'-0"	AUX UNIT TO 1ST A
6	X = 7'-1"	" " " 2 <sup>ND</sup> A
10	X = 1'-6"	" " " 1ST A
11	X = 1'-4"	1ST A UNIT TO 1ST B 1ST B " " 2 <sup>ND</sup> A 2 <sup>ND</sup> A " " 2 <sup>ND</sup> B

NOTES: 1. FOR COLOUR SCHEME TAPING & LABELLING OF FORMS & DIAGRAMS REFERRING SEE SPECIFICATION T. 1391.

POST OFFICE ENGINEERING DEPT. E-I-N-C'S OFFICE T.D.A.M. BRANCH	Z P.O. REFERENCES SPEC. 11391	FILE ASSEMBLY DRG. WIRING DGM.	SCALE: 1" = 4" AND AS THIRD ANGLE PROJECTION DECIMAL DIMENSIONS NOT TOLERANCED SUBJECT TO	APPD. IN TP 3 SECTION G. BROWN. DATE 2.12.36	DRN. C.T. TOD. CMD. H.C.	AMENDMENT FIGS 7 & 8 AMENDED. K.G.H. D.M.D. V.R.H. 10.5.47	SUFFIX C	REVISIONS REDAWNED FORMS 7 & 8 ELEVATION ADDED FORMS 10 & 11, 30W & 10W ADDED B.P.H. 17.11.48 DIMENSION LINES TO TIES REPOSITIONED 27-8-51	D E
---	--	--------------------------------------	---	--	--------------------------------	--	-------------	---	--------

FOR SUPERSED  
CABLE - FORMS  
1-11/TP. 540.  
(FOR USE IN UNIT AUTO  
NO. 12 EXCHANGES)