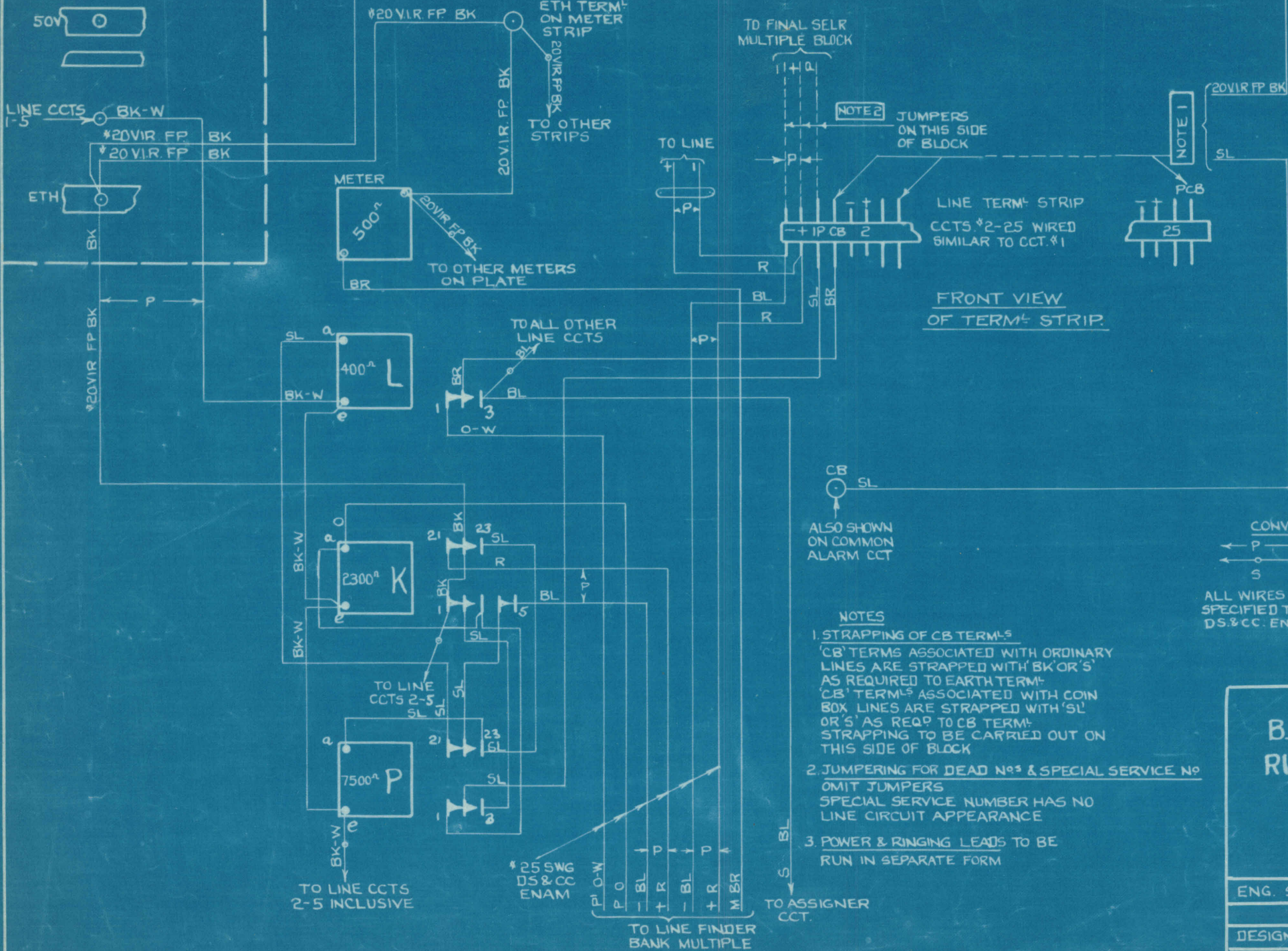


FUSE PANEL

(FRONT VIEW)



TO 1ST CB TERM ONLY

TO FINAL SELR MULTIPLE BLOCK

NOTE 2

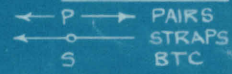
JUMPERS ON THIS SIDE OF BLOCK

NOTE 1

FRONT VIEW OF TERM STRIP

ALSO SHOWN ON COMMON ALARM CCT

CONVENTIONS



ALL WIRES NOT OTHERWISE SPECIFIED TO BE #23SWG DS & CC ENAMELLED WIRE

NOTES

- STRAPPING OF CB TERMS
 'CB' TERMS ASSOCIATED WITH ORDINARY LINES ARE STRAPPED WITH 'BK' OR 'S' AS REQUIRED TO EARTH TERM.
 'CB' TERMS ASSOCIATED WITH COIN BOX LINES ARE STRAPPED WITH 'SL' OR 'S' AS REQ TO CB TERM.
 STRAPPING TO BE CARRIED OUT ON THIS SIDE OF BLOCK
- JUMPING FOR DEAD NOS & SPECIAL SERVICE NO
 OMIT JUMPERS
 SPECIAL SERVICE NUMBER HAS NO LINE CIRCUIT APPEARANCE
- POWER & RINGING LEADS TO BE RUN IN SEPARATE FORM

XW3450

CHANGES

ISSUE I
8-8-32

APP

RELAY L	RN 46
" P	RN 47
" K	RN 48
METER	19A
APPARATUS	CODE

B.P.O. UNIT AUTOMATIC N°5 RURAL AUTOMATIC EQUIPMENT LINE CIRCUIT WIRING

ENG. SEC.	477A	DRAWN J.H.S
DESIGNS	Adm	TRACED G.H
		CHECKED <i>[Signature]</i>

XW3450

SIEMENS BROTHERS & CO LTD WOLWICH

A